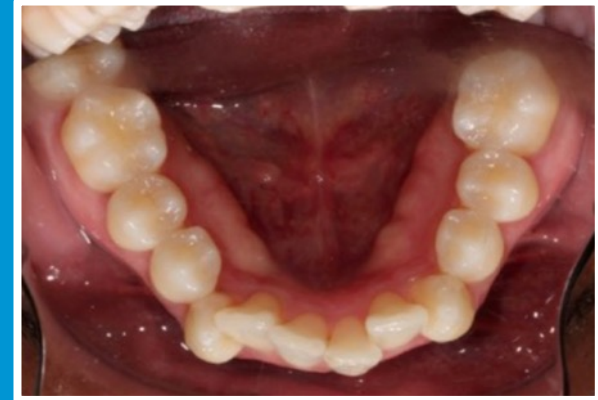
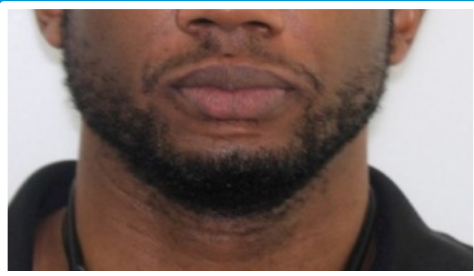


Lower incisor extraction

with severe crowding and severe overjet

CASE *Study*

Initial Records



Initial Records:

The patient presented with Class I canines, severe mandibular crowding, mild maxillary crowding, deep curve of Spee, severe overjet and severe overbite. Lower central incisor extraction was planned to address crowding.

6-Week Progress



Progress Visit 1 (at 6 weeks):

Patient returned with lower left incisor (LL1) extracted. The Brava appliance had started closing space at the lower centrals. The lower right cuspid (LR3) was now more accessible from the lingual but not ready for a lingual bracket. The rotation of upper centrals (U1's) was starting to correct, but a minor vertical discrepancy appeared between the two incisors caused by early torquing forces.

Note: A buccal Brava segment was requested, but labial brackets and a NiTi wire segment could have been used as an alternative.



5-Month Progress



Progress visit 3 (at 5 months):

Lower incisor space was 90 percent closed and the curve of Spee was 80 percent corrected. The lower right cuspid (LR3) was still buccal and rotated but it was now accessible from the lingual, so the buccal Brava segment was removed. LR3 was bonded using a section of the IDB tray and was engaged with the pre-programmed arm of the Brava appliance that had been covered with SoftFlow. The upper arch was close to achieving treatment goals. The overjet had reduced significantly as well as the overbite.



7-Month Progress



Recall visit 5 (at 7 months):

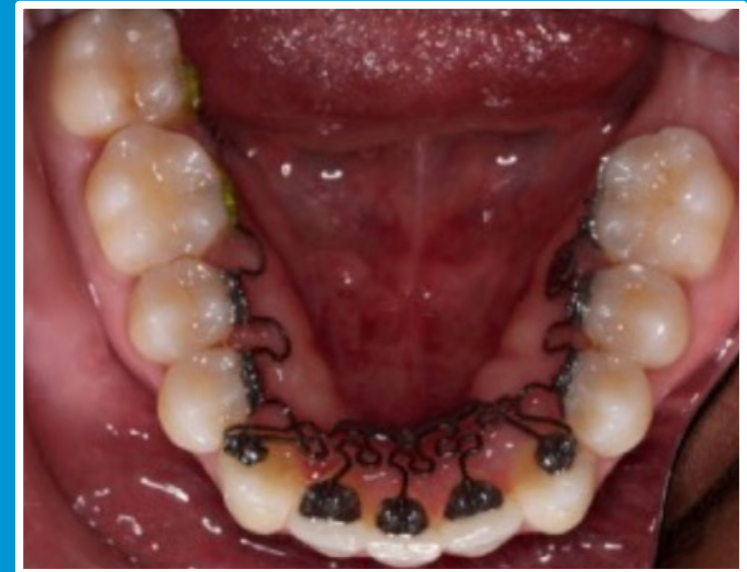
The lower incisor space was now closed. A refinement Brava appliance had been inserted at the last visit and was creating new tooth movement. Minor crowding was still noticeable in the upper arch. Progress photos revealed the teeth were still moving.



8-Month Progress



Progress visit 6 (at 8 months)
The lower curve of Spee was almost fully corrected. The midline was correct for a lower incisor extraction case. The case was very close to finish but a gap had developed between the upper incisors.



9-Month Progress

34Y 10M – Progress 12/20/21



Recall visit 7 (at 9 months):

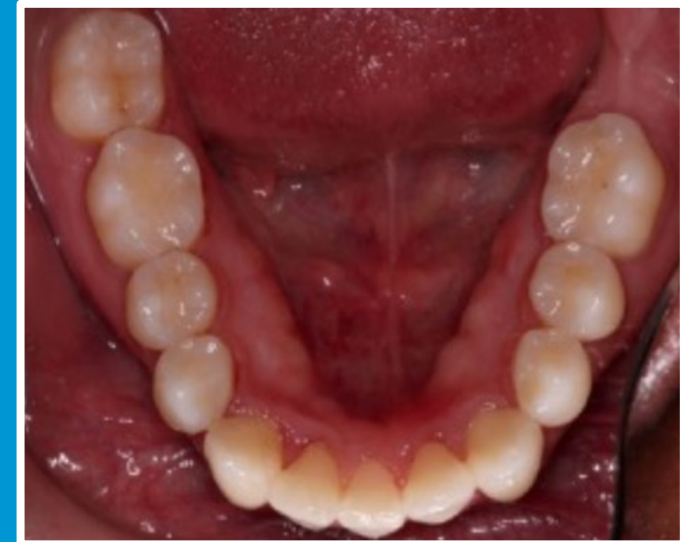
Based on progress photos, the teeth were still moving, so the decision was made to wait one more month to transition to finishing aligners. The treatment goals for overjet was near complete and the lower curve of Spee appeared flat. The space that had opened at the upper incisors was now closed without performing any intervention.



10-Month – Finishing Aligners Delivery



Progress visit 8 (at 10 months):
At this point, all treatment goals had been met except for minor tooth detailing. The Brava appliance was removed, the patient was scanned, and 4 aligners were provided to be worn one week per aligner.



11 - Months Final



Final Records (at 11 months):

All treatment goals were achieved. Contouring of the dentition was performed. The arches appeared coordinated and symmetric. Midlines were on. The canines and molars were Class I and socked in. Bimaxillary crowding was resolved, and the curve of Spee appeared flat.

Before & After



Simulation vs Actual Results

